



## VICTORIAN GEM

Enchanting period details thoughtfully blend with the modern features in this single family home surrounded by a peaceful garden and nestled between Porter and Davis Square.

Relax by the wood stove in the double parlor living room with pocket doors and beautiful woodwork enveloped in soft warm light. Take pleasure in the chef's kitchen with custom birch cabinetry, stainless steel appliances, and granite counters overlooking a large private patio designed to entertain with ease.

Unwind in the professionally landscaped garden that includes established magnolia, cherry, birch, dogwood, Japanese maple, and elm trees or escape to the second level covered porch for a serene retreat hidden by lush foliage.

Park in the driveway or 3 car garage and unload provisions to the covered back porch and through the heated mud room into the kitchen. Additional modern updates throughout include two beautifully updated full baths, home office, and the large finished laundry room.

Ideally located a few blocks from the Community Path, vibrant cafes, shops, and dining. Close to MBTA Red and Green lines in Porter, Davis, and Ball Square for a convenient commute to Tufts, Lesley, Harvard, MIT, and downtown Boston.

## 5 WILLOW AVENUE

SOMERVILLE MA 02144

VICTORIAN SINGLE FAMILY

LOT SIZE: .14 ACRES

LIVING AREA: 2,876 +/- SF

TOTAL AREA: 4,596 +/- SF

4 BEDROOMS, 2 FULL BATH, OFFICE

CHERISHED VICTORIAN CHARACTER

DOUBLE PARLOR W/ WOOD STOVE

CHEF'S KITCHEN & FORMAL DINING

MODERN UPDATES THROUGHOUT

GENEROUS & FLEXIBLE LIVING SPACE

ABUNDANT NATURAL LIGHT

LARGE PATIO & GARDEN

PROFESSIONAL LANDSCAPING

3 CAR GARAGE W/ EXTRA STORAGE

EXTRA PARKING (3+) IN DRIVEWAY

  
**TAMELA ROCHE**  
www.tamelarochecom




Exclusive Listing by Tamela Roche, Realtor®  
RE/MAX Real Estate Center, 907 Massachusetts Ave, Cambridge MA 02139



Information about this listing was gathered from third party sources including the seller and public records. RE/MAX Real Estate Center disclaims any and all representations or warranties as to the accuracy of this information. We represent the seller, not the buyer, in the marketing, negotiating and sale of this property, unless otherwise disclosed. However, the broker/salesperson representing the seller has an ethical and legal obligation to show honesty and fairness to the buyer in all transactions.



See the MLS Listing for more details.

 **RE/MAX** Exclusive Listing by Tamela Roche, Realtor®  
REAL ESTATE CENTER RE/MAX Real Estate Center, 907 Massachusetts Ave, Cambridge MA 02139

  
**TAMELA ROCHE**  
www.tamelaroch.com



## LEVEL 1

---


- Entrance** Covered Front Porch (Updated 2020) w/ Front Step Masonry Refreshed (2025)
- Flooring** Hardwood Throughout & Slate Flooring in Kitchen, Mud Room, Full Bath
- Foyer** Foyer w/ Crown Molding, Ceiling Medallion w/ Light Fixture, Stained Glass Window
- Living** Double Parlor Living Room w/ Wood Stove
- Pocket Doors, Crown Molding, Ceiling Medallion w/ Light Fixture
  - Wood Stove (Seldom Used) w/ Brick Fireplace & Hearth, Wood Mantle w/ Mirror
  - Extra Firewood Included
  - Windows w/ Tree Views & Custom Wood Shutters
- Full Bath** Beautifully Updated 2013
- Walk-In Shower w/ Glass Tile & Screen
  - Slate Floor, Recessed Lights, Ceramic Sink w/ Lighted Mirror
  - Heat, Exhaust Fan, Window w/ Custom Wood Shutters
- Dining** Private Formal Dining Room w/ Shaker Style Swinging Doors to Kitchen
- Crown Molding & Ceiling Medallion w/ Custom Light Fixture
  - Windows w/ Custom Wood Shutters
- Kitchen** Chef's Kitchen Updated 2013
- Custom Birch Cabinetry & Bookshelves, Granite Counters w/ Granite Backsplash
  - Bosch® Stainless Steel Double-Oven, Dishwasher, Built-In Microwave
  - Bosch® 5-Burner Gas Cook-Top & Exhaust Fan w/ Lighting by Yale®
  - GE Stainless Steel French Door Refrigerator/Freezer w/ Ice-Maker
  - Farmhouse Style Stainless Steel Sink w/ Front Apron
  - Insinkerator® Disposal w/ Safety Feature
  - Recessed & Under Cabinet Lighting
  - High-Top Cushioned Chairs for Counter Seating (4 Included)
  - 3 Large Bay Windows w/ Tree Views Overlooking Patio & Garden
  - Pocket Door to Level 2 Staircase & Interior Door to Lower Level Staircase
- Mud Room** Updated 2013: Heated Mud Room Off Kitchen w/ Slate Floor & Recessed Light
- Back Porch** Updated 2015: Covered Back Porch w/ Staircase & Walk-Way to Patio & Garden

See the MLS Listing for more details.





See the MLS Listing for more details.

 **RE/MAX** Exclusive Listing by Tamela Roche, Realtor®  
REAL ESTATE CENTER RE/MAX Real Estate Center, 907 Massachusetts Ave, Cambridge MA 02139

  
**TAMELA ROCHE**  
www.tamelaroch.com



## LEVEL 2

---

- Flooring** Hardwood Throughout, Carpet Runner on Front Wood Staircase - Updated 2023
- Porch** Covered Front Porch - Updated 2020 Including New Roofing Under New Floorboards
- BR #1 & 2** Primary Bedroom Comprising 2 Generous Bedrooms - Updated 2013
- BR #2 - Redesigned as a Large Dressing Room w/ Custom Wardrobe Cabinetry
  - Pocket Doors & Ceiling Light Fixture
  - Windows w/ Tree Views & Custom Wood Shutters
- BR #3** Located Across Hall from Primary Bedroom
- Closet & Ceiling Light Fixture
  - Windows w/ Tree Views & Custom Wood Shutters
- Office** Home Office w/ Cathedral Ceiling & Skylight
- Recessed Lights & Ceiling Light Fixture
  - Interior Staircase to Kitchen w/ Pocket Door
  - Windows w/ Tree Views & Custom Wood Shutters
- Full Bath** Spa Inspired Full Bathroom w/ Bamboo Floor - Updated 2012
- Large Soaking Tub & Separate Glass Tile Walk-In Shower w/ Glass Door
  - Custom Sink w/ Bamboo Counter & Large Mirror
  - Heat, Pocket Door, Heated Towel Rack, Exhaust Fan, Recessed & Sconce Lighting
  - Windows w/ Tree Views

## LEVEL 3

---

- BR #4** Large Bedroom w/ Open Floor Plan
- 2 Ceiling Fans w/ Lighting, Additional Storage in Eaves
  - Walk-In Cedar Closet w/ Light, Window & Storage Areas in Eaves
  - Windows w/ Tree Views & Custom Wood Shutters

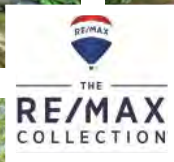
## LOWER LEVEL

---

- Laundry** Large Finished Laundry Room w/ Recessed Lighting - New 2015
- Bosch® Washer & Dryer (Included, New 2012), Sink w/ Cabinet (Hot & Cold)
  - Slate Floor, Heated Towel Rack, Window
- Basement** Unfinished Storage Area w/ Systems, Windows, Concrete Floor, Utility Sink (Hot & Cold)
- Extra Refrigerator/Freezer (New 2020), Stacked Washer/Dryer (Included, Ages Unknown)
  - Front & Back Interior Staircase, Walk-Out via Concrete Steps to Patio & Garden

See the MLS Listing for more details.





See the MLS Listing for more details.

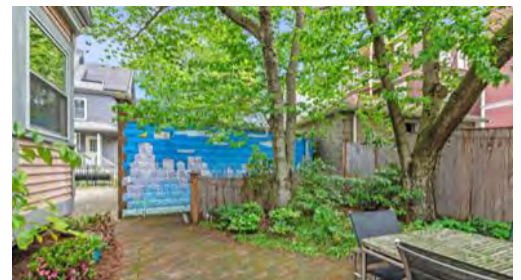
**RE/MAX** REAL ESTATE CENTER Exclusive Listing by Tamela Roche, Realtor®  
RE/MAX Real Estate Center, 907 Massachusetts Ave, Cambridge MA 02139

  
**TAMELA ROCHE**  
www.tamelaroch.com



## SYSTEMS & AMENITIES

<b>Alarm</b>	Alarm System w/ Motion Detectors (Hardware Included)
<b>Electric</b>	Circuit Breakers, 2 Main Electrical Panels 100 Amp Each, Power for Outdoor Use
<b>Exterior</b>	Vinyl Siding w/ Aluminum Trim, Gutters & Downspouts, Motion Sensor Security Lighting
<b>Fence</b>	Rear Fence & Right Side Gate Owned (Rear Fence & Gate New 2020)
<b>Garage</b>	3 Car Garage: 3 Newer Doors (2014) w/ 2 Automatic Door Openers (Left Side & Middle)
<b>Heating</b>	Burnham Gas Boiler (New 2012, Serviced Regularly) w/ Steam Radiators
<b>Cooling</b>	Carrier Central A/C Cooling for Levels 2 & 3 (Age Unknown, Serviced Regularly)
<b>Hot Water</b>	40 Gallon Hot Water Heater (New 2025, Natural Gas) by A.O. Smith
<b>Laundry</b>	See Laundry Details on Previous Page (Lower Level)
<b>Landscape</b>	Professional Landscaping by Pemberton Garden Services <ul style="list-style-type: none"><li>Established Magnolia, Cherry, Birch, Dogwood, Japanese Maple, and Elm Trees</li></ul>
<b>Parking</b>	3 Car Garage and 3+ Off-Street Parking Spaces in Driveway w/ Pavers
<b>Patio</b>	Exterior Drainage (Installed 2015) & Patio Area Reconfigured & Leveled (2020)
<b>Porches</b>	3 Covered Porches: Level 1 Front, Level 1 Back, and Level 2 Front
<b>Roof</b>	Asphalt Shingles (New 2013 w/ 10 Yr Warranty)
<b>Shutters</b>	Custom Wood Shutters (New 2013) by Back Bay Shutter Company
<b>Tax FY25</b>	<u>\$16,020.89</u> Includes CPA Fee <u>\$220.64</u> & Residential Exemption Discount <u>\$4,324.33</u>
<b>Trash</b>	Bin Storage Next To Garage, Trash/Yard Waste/Recycling Pick-Up By City of Somerville
<b>Utilities</b>	Monthly Ave. (Varies by Use & Temp): Electric: <u>\$158</u> Gas: <u>\$166</u> Water/Sewer: <u>\$63</u>
<b>Water</b>	Public Water & Sewer w/ City of Somerville



Outside Mural by Local Artist Kit Collins - kitschcollins.com (Painted 2020)

See the MLS Listing for more details.

